



TECHNICAL BULLETIN

STACKING TILE PANELS



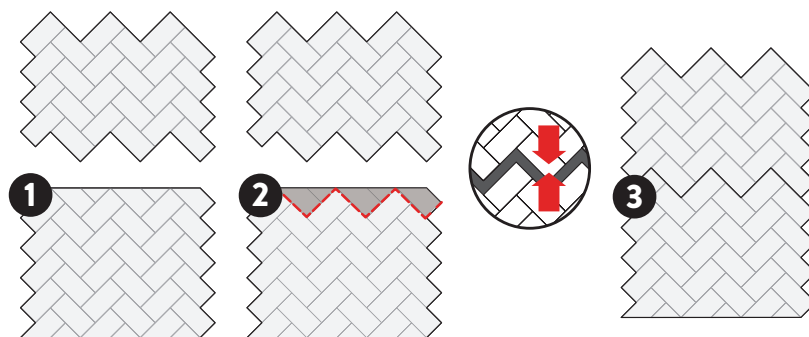
STACKING TILE PANELS

When working with areas that require vertically stacked tile panels, calculating square footage is essential. For designs featuring Hexagon or Herringbone patterns, Six3Tile offers a “Vertical Stack” SKU, specifically designed for these applications. This product complements our traditional 30-square-foot kit, providing a seamless solution for spaces where you’ll have a straight edge, such as the top or bottom of your installation.

Begin your project with the traditional pack for a strong foundational run, then transition to the Vertical Stack panels to effortlessly extend your design upward, filling any additional vertical space with precision.

Some areas may require stacking tile panels. Tile patterns with straight edges, such as subway, are very easy to stack. Use spacers to maintain grout lines when stacking. Some patterns, such as Herringbone or Hexagon, require a few extra cuts but is also easy with some planning.

- 1** Determine area that will be stacked. Panels do not have to be rotated to line up.
- 2** Identify tiles that need to be cut out. An oscillating tool is ideal for these cuts.
- 3** Cut close to the tile surface pattern to allow stacked sheets to maintain proper grout line width. Use spacers when attaching top sheet.



PRO TIP: Install sheets touching the counter first, installing stacked tile panels second.

